

# Snagit®

TechSmith®

## Customize and Deploy Snagit to Fit the Needs of Your Institution

Figure 1: Default Snagit Install

The image below shows the default capture interface.

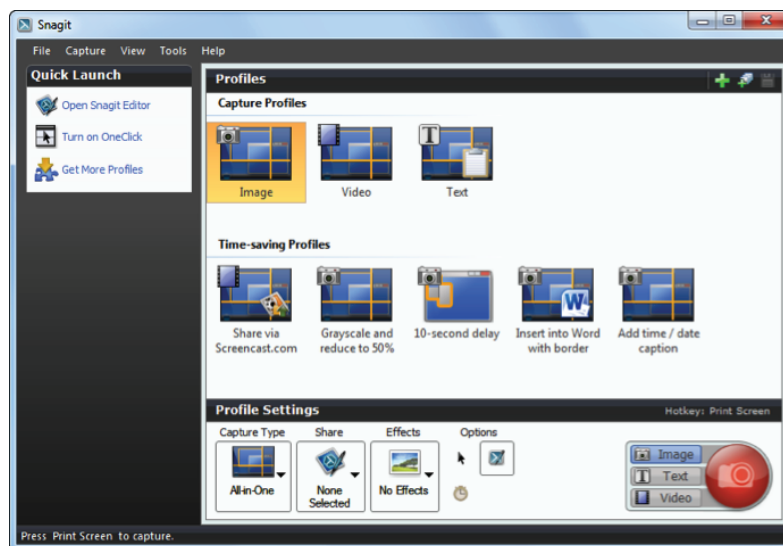
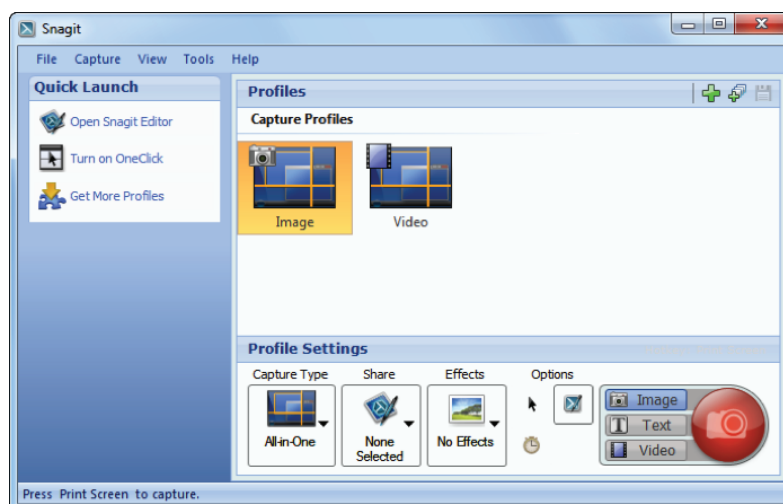


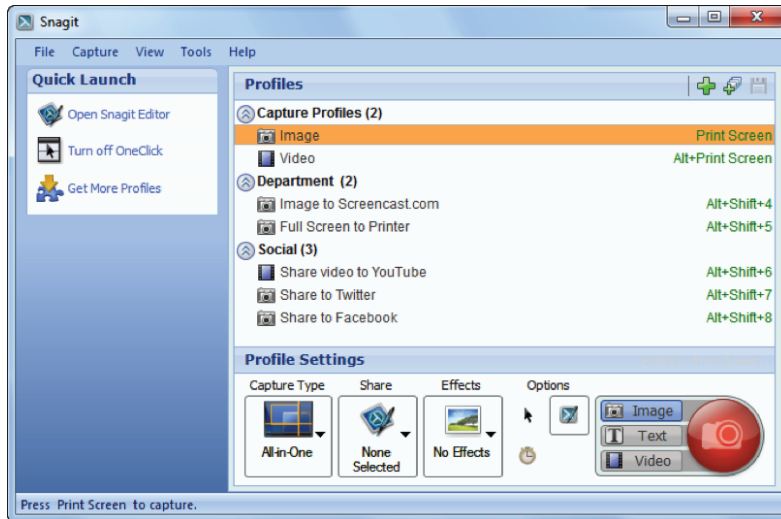
Figure 2: Remove Non-Essential Profiles, Apply Blue Theme

It can be easier to train new users if you know they only have access to the basic capturing of images or videos. You can always distribute additional profiles later.



### Figure 3: Default List View

This is a convenient way to display numerous custom profiles with the added benefit of listing the hotkey associated with each.



### Figure 4: Default to Snagit OneClick

This minimalist capture method allows users to initiate a capture by hovering (or clicking) over the yellow bar regardless of what program they are using at the time. This is great for those who may be familiar with Jing.

